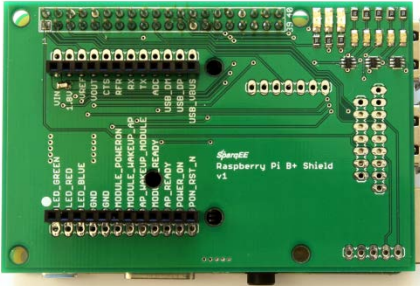


ShieldRB+ Datasheet



The ShieldRB+ is a shield or connecting board that connects the CELLv1.0 to the Raspberry Pi B+ without any additional wiring. It also provides LEDs for the CELLv1.0 status lines.

In addition, breakouts are provided for the four additional SparqEE boards (ACCELv1.0, GPSv1.0, POWERv1.0, RELAYv1.0) if the user prefers to directly connect any of those boards to the shield.

- SparqEE: <http://sparqee.com/>
- Raspberry Pi B+ Shield: <http://www.sparqee.com/products/sparqee-shieldrb>
- Forum: <http://www.forum.sparqee.com/>
- Code/Drivers: <http://www.sparqee.com/code-cell/>



The logo for SparqEE, featuring the word 'SparqEE' in a stylized font. The 'S' is grey and the 'parqEE' is yellow. There are three yellow lines above the 'S' that resemble a signal or a spark.

Ecosystem:

SparqEE helps you every step of the way with the CELLv1.0 to easily get your data from Your Device, through The Cloud, and back out to Your Smartphone or Computer!



Specification:

Physical

- 56mm x 85mm (2.20" x 3.35")
- Weight: 0.80oz

Operating Temperature

- -40°C to +85°C